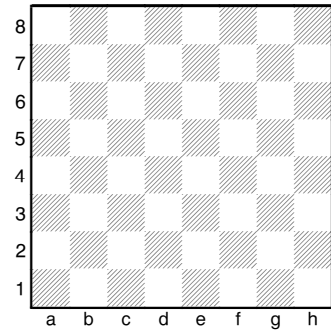


Arbeitsblätter für den Schachunterricht	Name: _____
--	-------------

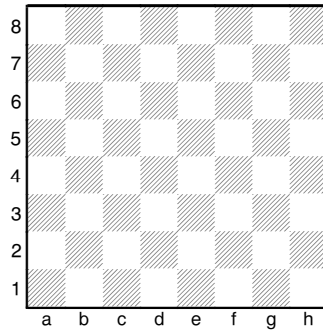
Unterrichtsergebnis	1. THEMA: Einteilige Doppelangriffe	RTP: GLT1.2
---------------------	--	--------------------

Erfinde und zeichne einen **Spießangriff** mit zwei verschiedenen Farben ein.

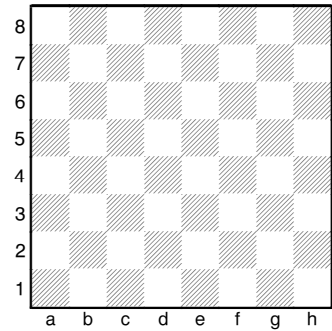
Läufer



Dame

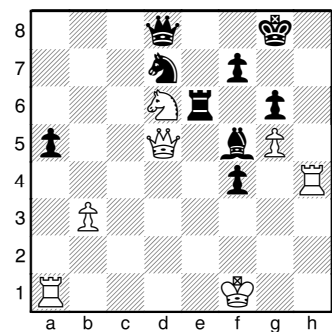
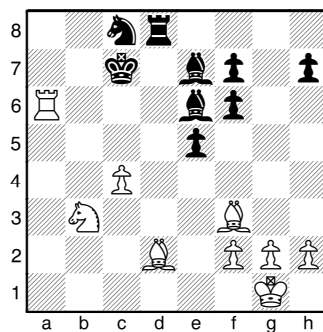
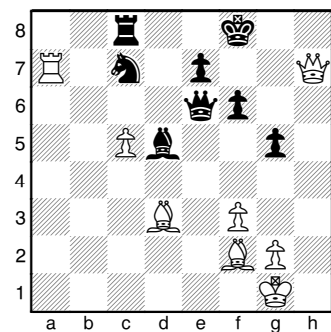


Turm

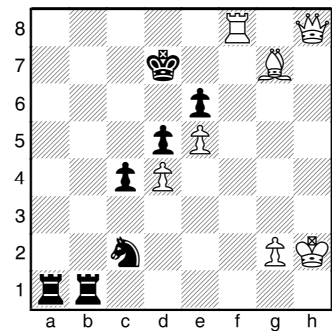
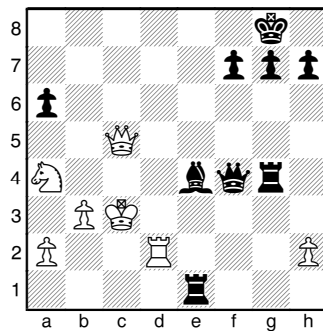
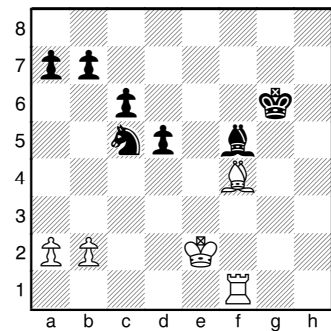


Notiere das Ergebnis unter dem Diagramm. Falls nicht möglich, zeichne einen Pfeil ein.

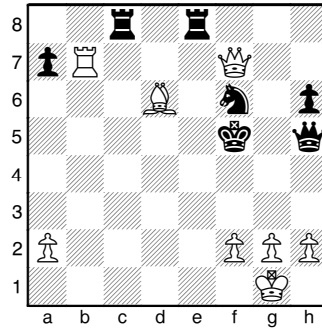
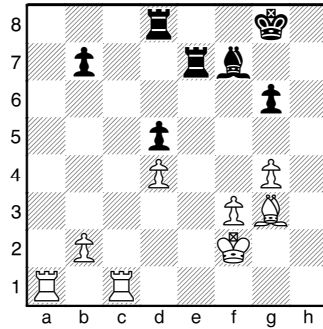
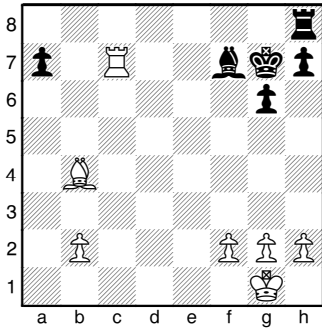
Gruppe



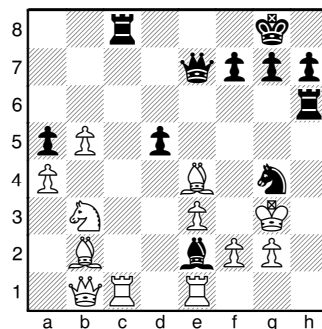
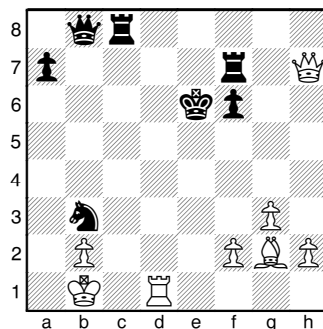
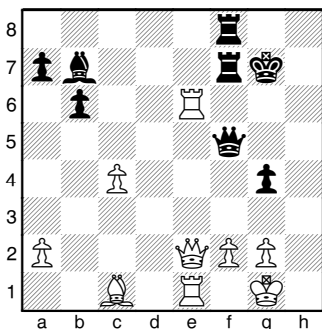
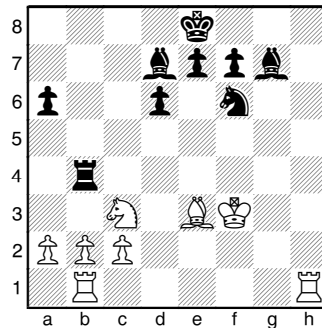
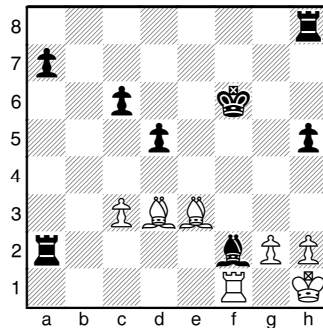
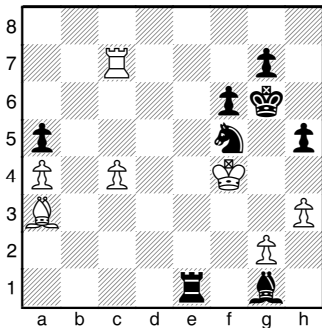
Partner



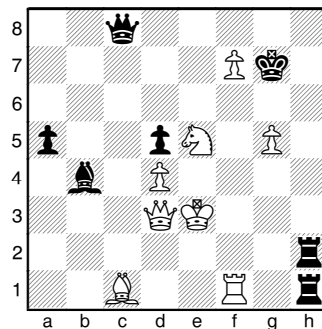
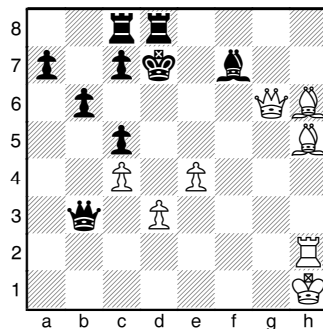
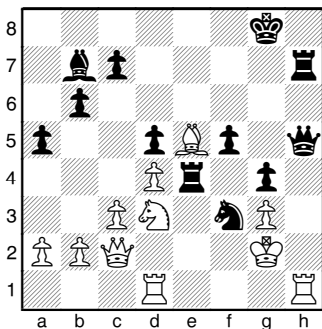
Einzel



Hausi



Bonus

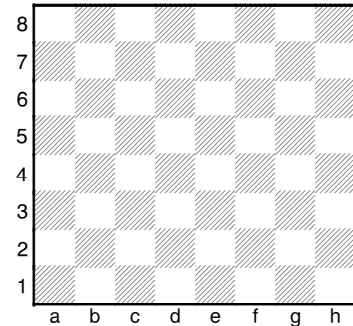


Arbeitsblätter für den Schachunterricht	Name: _____
--	-------------

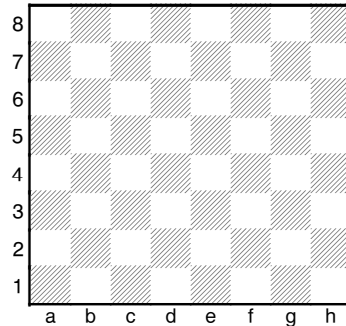
Unterrichtsergebnis	1. THEMA: einteiligen Doppelangriffe	RTP: GLT1.2
---------------------	---	--------------------

Erfinde und zeichne einen **Fesselungsangriff** mit zwei verschiedenen Farben ein.

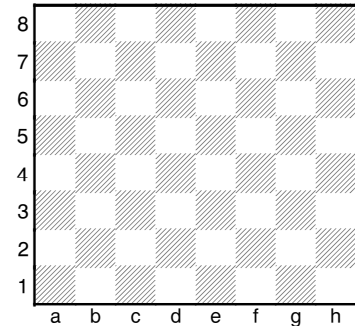
Läufer



Dame

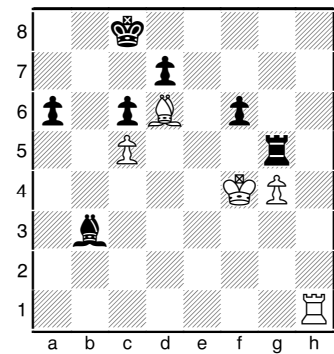
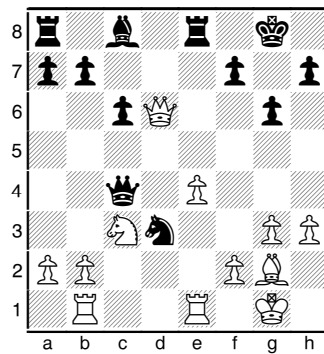
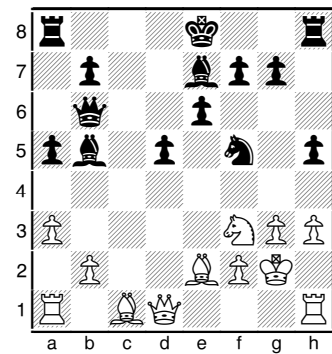


Turm

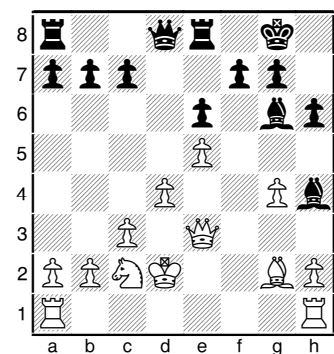
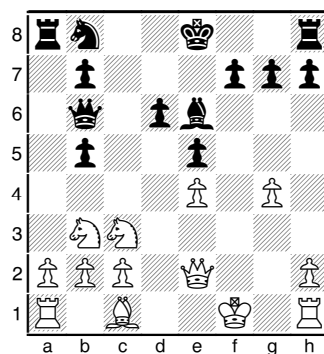
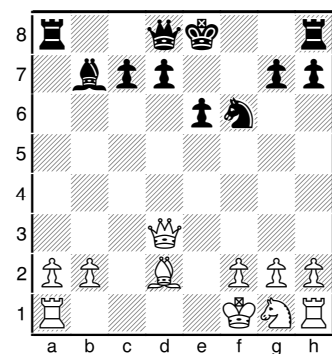


Notiere das Ergebnis bei den Diagrammen. Falls nicht möglich, zeichne einen Pfeil ein.

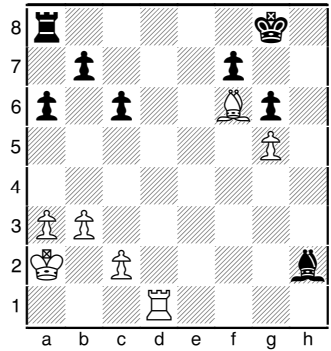
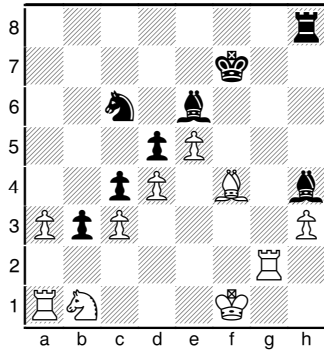
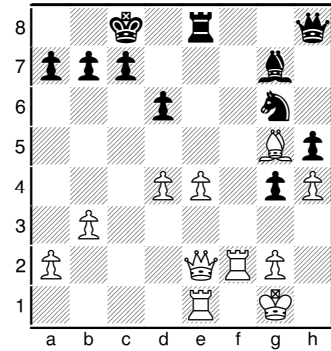
Gruppe



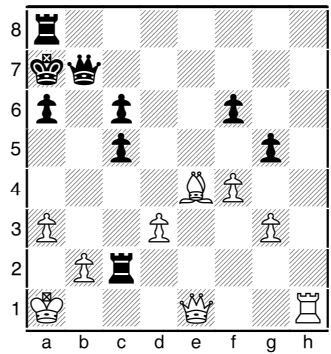
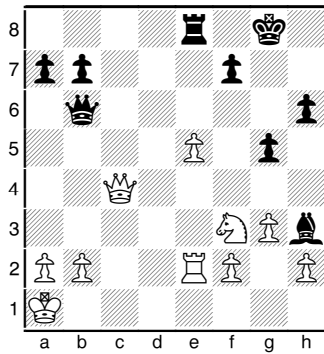
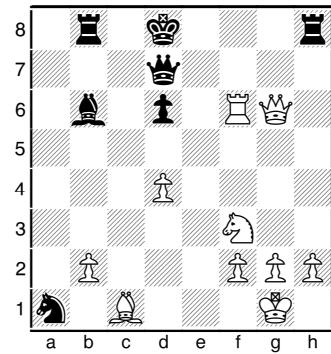
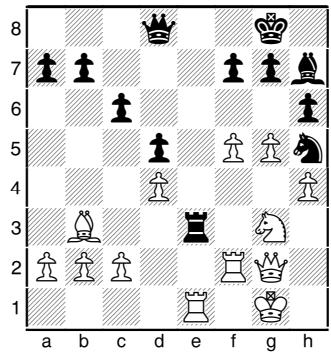
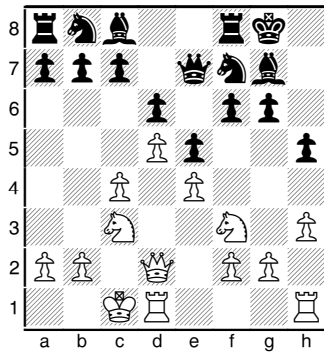
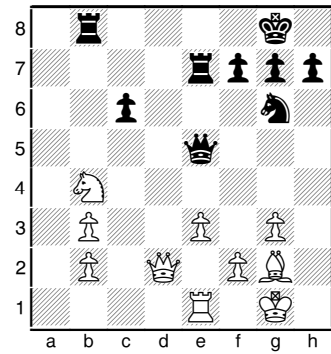
Partner



Einzel



Hausi



Bonus

